



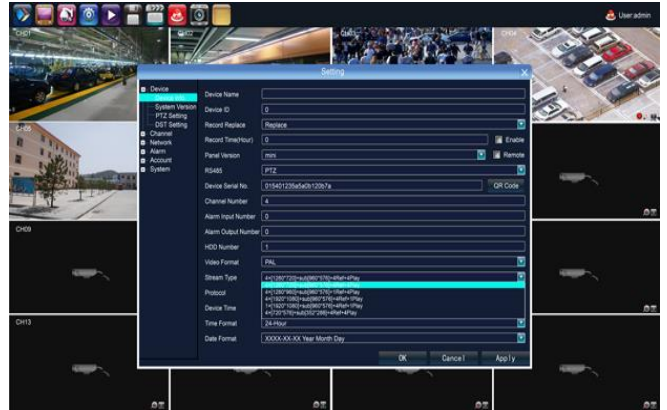
1U 1HDD NVR 16CH 960P/ 8CH 1080P

Model: ADK-1016

Front Panel :



Rear Panel :



Key Features

- P2P cloud service, including cloud connecting, cloud monitoring, cloud transmitting to access IPC and NVR at any time and any place
- Support Onvif protocol, support High profile S, High profile G, compatible with different IP camera that based on Onvif, RTSP standard
- Support megapixel HD network video preview, storage and playback;
- Support search, playback and backup by event;
- Support all channel image display on one screen at same time, support 4 channels' image display by ainstream, and 4 channels playback;
- Support monitor PTZ on preview mode



- Offer CMS for free



Technical:

Model Number	ADK-1016	
Operating System	Embedded LINUX operating system	
Image Code Control	Image code quality adjustable, variable bitstream and constant bitstream optional	
Dual Stream	Each channel can set main stream and sub stream	
Video Standard	1080P(1920×1080)30Frame/Sec./960P/(1280×960)/720P(1280×720)30Frame/Sec.	
Monitoring Image Quality	1080P(1920×1080) / 960P/(1280×960)/720P(1280×720)	
Image Motion Detection	Each screen can set multiple detection areas and set 6-level sensitivity (IPC Support)	
Recording Playback Quality	Any 4ch playback simultaneously	
Region Cover	Every channel can set 4 cover regions (IPC Support)	
Recording Mode	Support manual , auto, dynamic detection, alarm trigger record mode(Partly needs IPC Support)	
Backup Way	Support U disk, USB mobile HDD, USB DVD-RW network storage and backup	
Operation Way	Mouse	
Local Login	User name and password	
Recording Storage	Local HDD, network	
External Ports	Video Input	① 16×(1280*960)+sub[640*360]+1Ref.+1Play 16CH 1.3MP IP Camera
		② 8×(1920*1080)+sub[720*576]+1Ref.+1Play 8CH 2.0MP IP Camera
		③ 4×(1920*1080)+sub[720*576]+2Ref.+1Play 4CH 2.0MP IP Camera
		④ 4×(1280*720)+sub[720*576]+2Ref.+4Play 4CH 1.0MP IP Camera
	Audio Input	16ch network audio input
	Video Output	1ch VGA+1ch HDMI (HDMI synchronization output audio)
	Network Port	1 RJ45,10M/100M self-adaptive LAN port
USB Port	2 USB 2.0 ports	
Wireless Port	WIFI	
HDD	HDD Port	1 SATA HDD Port
	MAX Capacity	Each port supports MAX 6TB HDD
Mobile Surveillance	Support(iPhone, Windows Mobile, BlackBerry, Symbian, Android) smart phone	
Power Supply	12V2A	
Power Consumption	≤25 (without HDD)	
Working Temperature	-10°C ~ + 55°C	
Working Humidity	10%-90%	
Dimension	Equipment : 260mm×220mm×43mm , Packing : 355mm×255mm×88.5mm	
Weight(without HDD)	N.W. : 1.5Kg ; With packing : 2.4Kg	
Outside Carton	10 pcs/carton. 525mm×455mm×365mm ; Weight : 25 Kg	



Installation Way	Desktop Installation
------------------	----------------------

WWW.ADKSECURITY.NET